

An Initiated By



CENTURY 21
THE REAL ESTATE REVOLUTION

A
ONE
of-a-kind lifestyle



City Home
CENTURY ONE
COMFORTS · CONVENIENCES · CONNECTIVITY

1/2 BHK Premium Apartment

This is the
ONE
where all your dreams will come true



the **ONE**

where you can elevate
the way of your life

Century One is a place where you can live your life in a totally new way, complete with elegant and modern conveniences and spectacular pleasures to help you unwind after a long day. Living here is a once-in-a-lifetime experience.

600

1/2 BHK
APARTMENTS

11000 Sq.ft

MODERN
CLUB AMENITIES

1st PROJECT
ON MAIN HIGHWAY





the **ONE**
that lets you revel in the
comfort of luxury

Enjoy a luxury that was made just for you. Century One is tastefully constructed with upscale interiors to provide you with a roomy house where you can have a happy life with your family. It is located on Main Ajmer Road, Jaipur's developing area, giving you great connectivity to prominent places. With easy access to transportation hubs and well-connected roadways, commuting is a breeze, ensuring that you are never far from the pulse of the city.



the ONE

with a vast green expanse
to find tranquility

Step outside the exquisitely landscaped garden and be greeted by an enchanting symphony of vibrant colors, fragrant blooms, and serene pathways. Immerse yourself in the serenity of nature as you relax on the meticulously manicured lawns, or find solace in the shade of towering trees.



Children's Play area



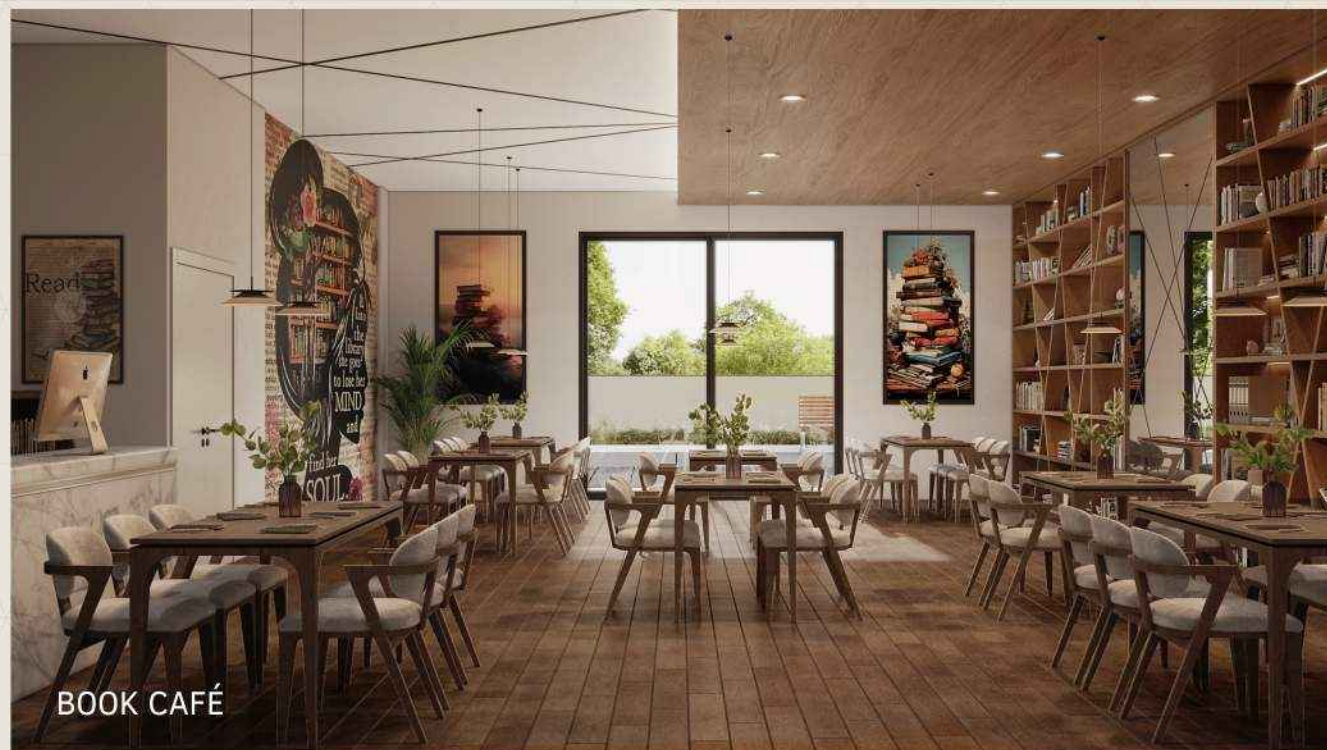
Gazebo



Iconic statue plaza



Indoor Games

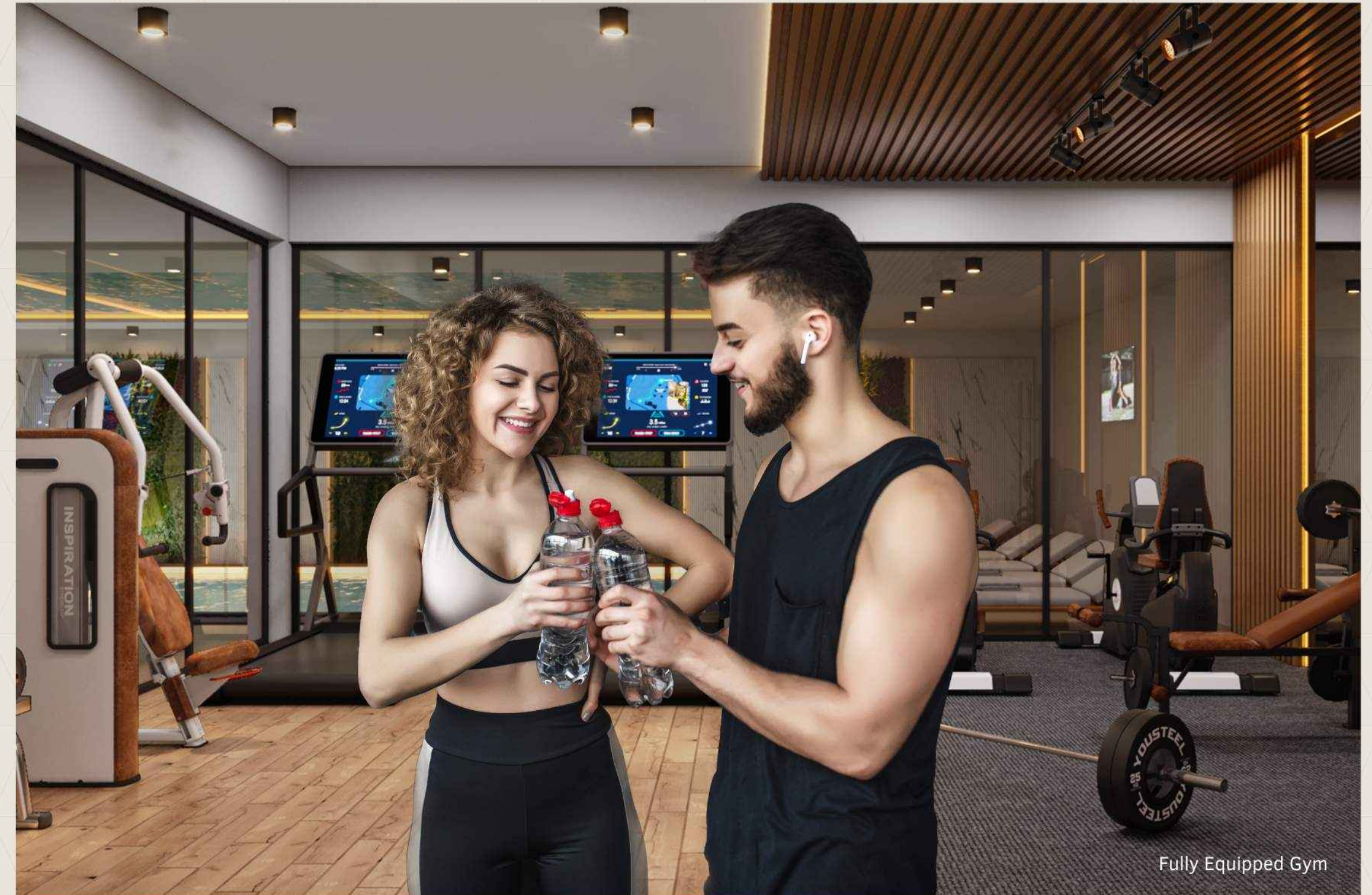


BOOK CAFÉ

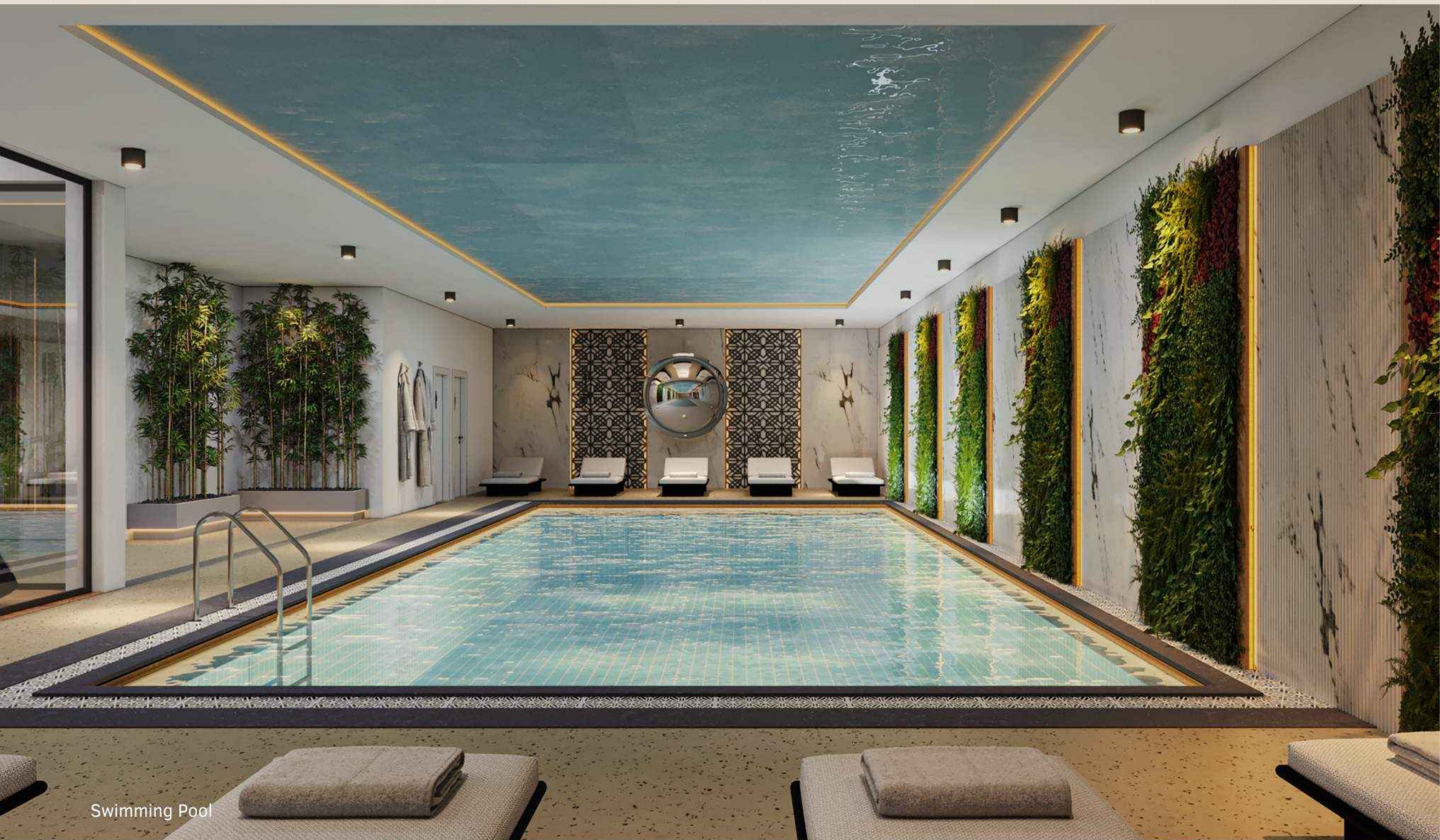
Comfort

for Amenities

Embrace a life of opulence and tranquility in our thoughtfully designed homes that prioritize your comfort above all else. Each residence is meticulously crafted to cater to your every need, ensuring a haven of relaxation and bliss. Enjoy modern amenities that elevate your living experience, from lush green spaces and recreational areas to state-of-the-art fitness centers and rejuvenating spa facilities. Unwind and create lasting memories in an environment that's truly tailored for your well-being"



Fully Equipped Gym



Swimming Pool



BASEMENT FLOOR PLAN

BUILT UP AREA	4974.47 sq.ft.
---------------	----------------

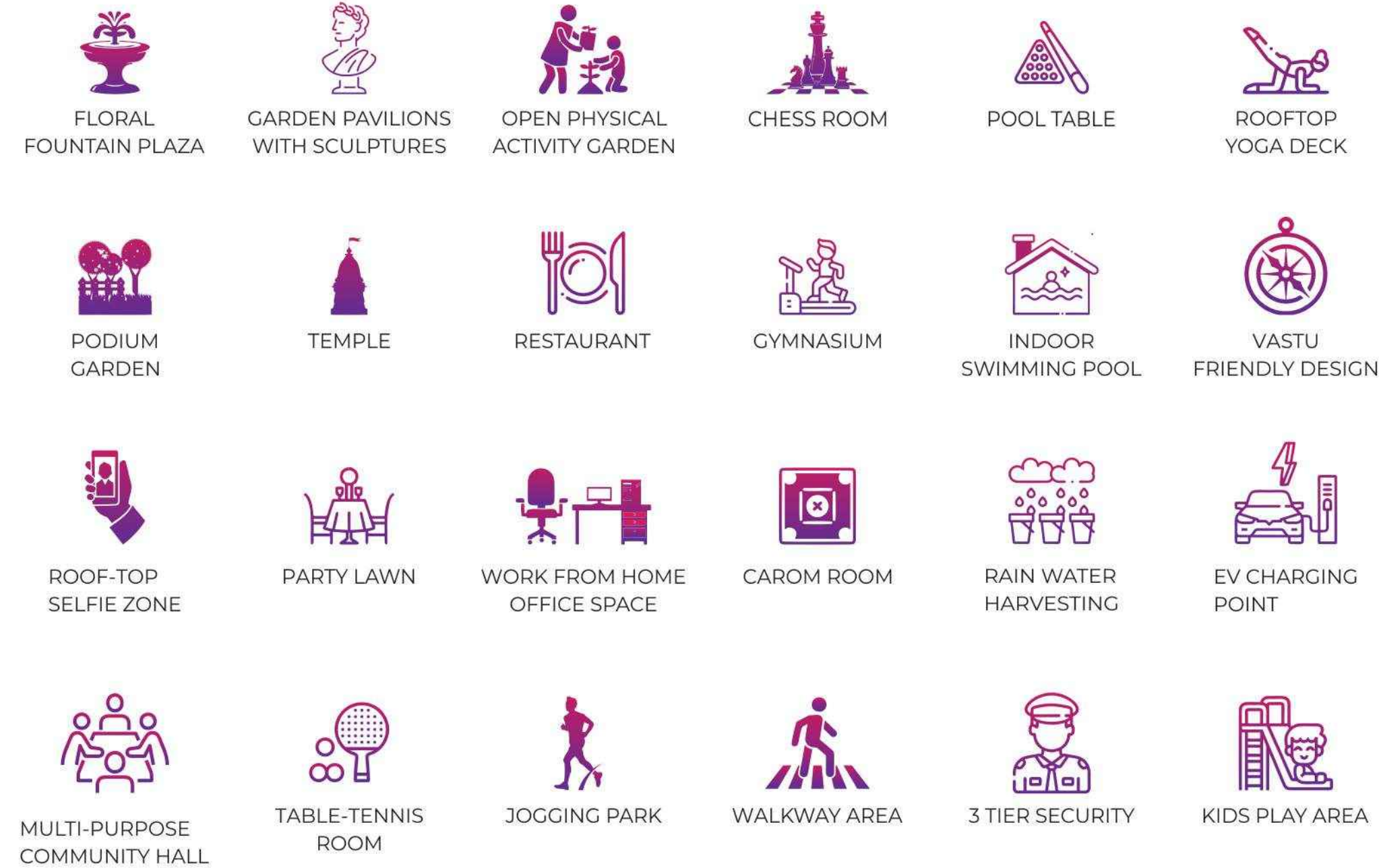


GROUND FLOOR PLAN

BUILT UP AREA	3218.32 sq.ft.
---------------	----------------



Club House

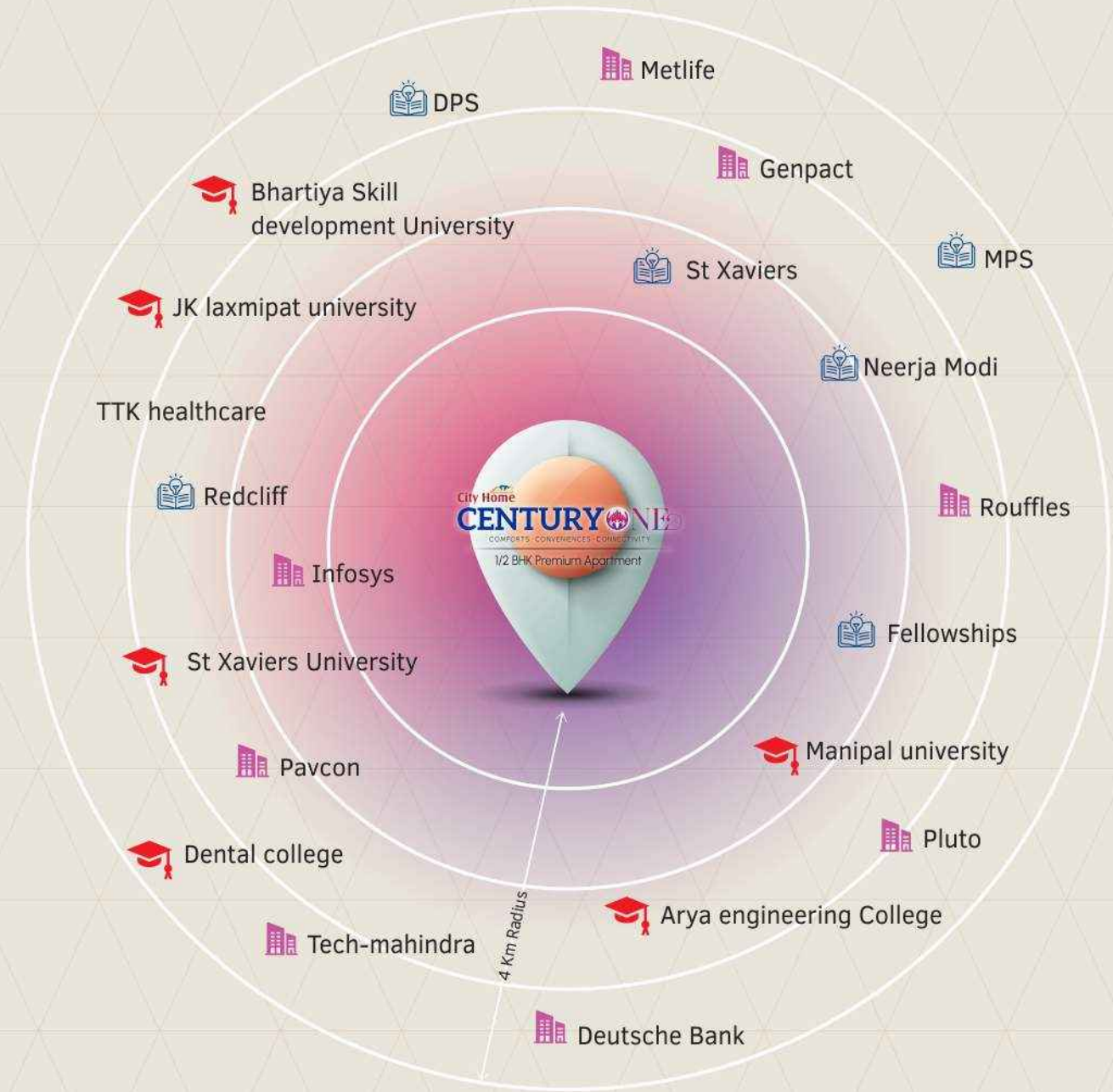


Convenience

about Good Location

Location is key, and our prime address offers the epitome of convenience. Nestled strategically in a vibrant and thriving neighborhood, you'll find yourself at the heart of everything you desire. Experience the ease of accessing renowned schools and universities, ensuring your children receive the best education. With top-tier malls, cinemas, and entertainment venues just a stone's throw away, you'll always be spoiled for choice when it comes to leisure activities. Everything you need is within reach, making daily life a breeze.

- Top schools (within 4Km)
- Top Universities(within 4Km)
- Mahindra Sez companies





Stilt Floor Plan



First Floor Plan



1BHK UNIT (TYPE-01)

UNIT NO.-102,103,114,115,135,148,150



SALEABLE AREA	560.00 sq.ft.
CARPET AREA	321.95 sq.ft.
UNIT BUILT UP AREA	421.08 sq.ft.
BALCONY AREA	65.12 sq.ft.



1BHK UNIT
(TYPE-02)

UNIT NO.-137



SALEABLE AREA	465.00 sq.ft.
CARPET AREA	321.84 sq.ft.
UNIT BUILT UP AREA	372.75 sq.ft.
BALCONY AREA	18.29 sq.ft.



2BHK UNIT PLAN
(TYPE-03)

UNIT NO.- All 2BHK Unit



SALEABLE AREA	919.00 sq.ft.
CARPET AREA	619.36 sq.ft.
UNIT BUILT UP AREA	735.61 sq.ft.
BALCONY AREA	70.18 sq.ft.





Structure	RCC Earthquake Resistance Structure with ACC blocks partition
Flooring	Verified Tiles in Bedroom, Lobby and Dinning
Common Area Passage	Verified Tiles
Staircase	In Granite Stone
Kitchen Counter	In Granite Stone with Marble Partition
Lifts	High Speed Branded Lifts
Pipe Fittings	Branded CPVC of Astal , Supremen or Equivilant Brand
CP Fittings	Branded Bathroom and Kitchen Fittings of Asain, Cera, Hindware or Equivilant Brand
Door	Double Side Laminated Flush Doors with Hardware
Windows	Aluminium Track Windows
Paint	Putty on internal Walls with Weather Shield Paint on External Area
Electrical	Branded Modular Switch with Wiring of RR Cable, Legrand , Fine or Equivilant
Parking Area	Designer Paver blocks with Landscaping



Specifications

About Company



Century 21 is a well-known and respectable real estate company. Century 21 has a lot of experience in this field, and we know who is looking to buy a home. We are working for you as a real estate business with local knowledge, which offers you an advantage in finding and presenting your home.

It has carefully curated a culture of invention, dedication, and commitment to values. The company assures its quality and standards to make its customers investments worthwhile. Currently, the group is working on 3–4 projects totaling almost 6 lac sq. ft., and the construction is already in progress.

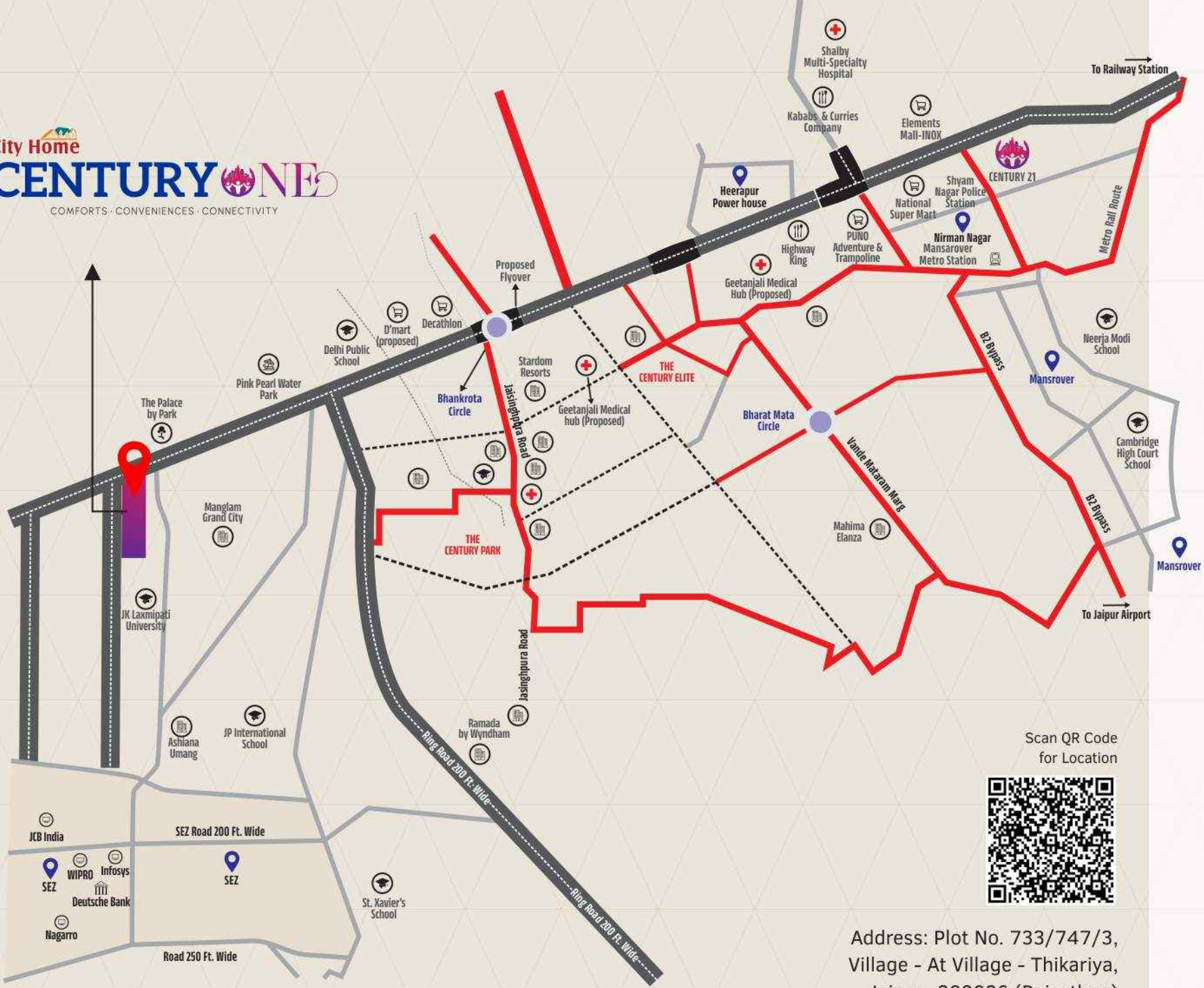
Century 21 thinks that a house is more than just four walls. It's an emotion, a life experience, and Century 21 always considers that.

City Home Group is a paragon of excellence, leaving an indelible mark on the landscapes of Jaipur, Jodhpur, Pali, and Barmer. With a stellar reputation in the real estate sector, they boast an impressive portfolio, having successfully completed 14 projects encompassing Plotted Development, Group Housing (Multi Storey), Row Houses, Farm Houses, and Hotels, covering over 2 Million Square feet of built-up area across a vast expanse of 300 Bigha of land.

Recognized for their commitment to delivering a magnificent lifestyle of Modern Budget Homes, City Home Group upholds uncompromising quality standards and fosters trust with their customers through unmatched services and tireless dedication.



Connectivity



Address: Plot No. 733/747/3,
Village - At Village - Thikariya,
Jaipur- 302026 (Rajasthan)

DISTANCE CHART

EDUCATION

• Neerja Modi	5 Min
• Jai Shree Periwal	5 Min
• St. Xavier's	6 min
• Poddar World School	6 min
• J.D. International School	5 min
• Ashian World School	10 min
• Delhi Public School	5 min
• edify world school	5 min

HEALTH

• Siddharth Hospital	7 min
• Ayush Hospital	11 min
• Rawal Hospital	10 min
• Garg Child Hospital	10 min
• Dulet Hospital	7 min
• Ashok Hospital	10 min
• Malot Hospital	5 min

ENTERTAINMENT

• Mahindra World City	5 min
• Domestic Sez	5 min
• Bagru Industrial Park	10 min
• ARG Industrial Park	10 min
• solitaire Industrial Park	10 min

College

• Manipal University	5 min
• Arya Institute of Engineering	2 min
• JK Lakshmipat University	5 min
• Jaipur Institute of Technology	5 min
• Geetanjali Medical College	7 min
• Rajasthan College of Engineering For Women	5 min
• NIMS Medical College	5 min
• Radhe Krishna Institute of Technology	5 min
• Jyoti Vidyapeeth College	15 min

Hotel & Restaurant

• Hotel Highway king	5 min
• Shivam Hotel & Resort	2 min
• Hotel Amar Palace	10 min
• Hotel kanchan Kesari	5 min
• Pink Pearl Water Park & Fun City	5 min
• Ramada	10 min
• Jaipur Saffron & Sweet	7 min
• The Timber Garden	10 min